

MARINE CRANES



Designed. Built. Marine.



DESIGN

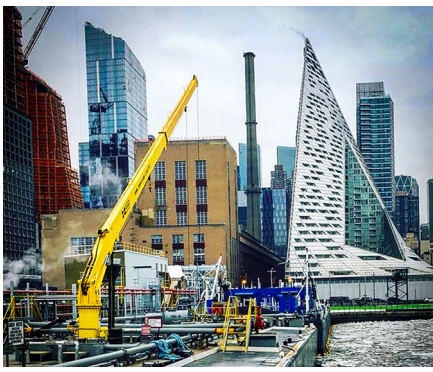
- ▷ 25+ year service life
- ▷ Suitable for marine environments
- ▷ Cold weather operation

Designed for reliable service in harsh conditions. Hawboldt marine cranes are up to the toughest challenges.

APPLICATIONS

- ▷ Cargo handling
- ▷ Hose handling
- ▷ Stores handling

Custom built to a wide variety of applications



STANDARD FEATURES

- ▷ Marine coating system
- ▷ Low temperature operation, down to -20 °C
- ▷ Fixed, Telescopic, and Knuckle boom configurations
- ▷ Load holding on cylinders, winches, and slewing drives
- ▷ Proportional, multi-function controls

CUSTOM ENGINEERED

Hawboldt offers unmatched expertise in developing flawless, world-class customized marine crane applications. We engineer and supply the whole project to ensure a complete solution and offer training on all of our equipment.



Available with a slew of options, our sales staff would be happy to discuss your application and find the perfect solution.

- ▷ Integrated or below deck hydraulic power unit
- ▷ Wired and wireless remote controls
- ▷ Load Moment Indicator (LMI) system
- ▷ Flagging sheave head
- ▷ Work area lighting
- ▷ Auxiliary winches
- ▷ Dual winch speed modes: low speed / high torque and high speed / low torque
- ▷ Grooved winch drum
- ▷ Personnel lifting
- ▷ Lightning protection
- ▷ Stainless steel fittings and hose ends
- ▷ Designed and certified to the many of the International Association of Classification Standards, including Lloyd's Register, Bureau Veritas, American Bureau of Shipping, and DNV GL.



CRANE TYPE	REACH(m)	MAX CAPACITY(mT)	OTM(kN-m)	PEDESTAL DIAMETER(m)	DEAD WEIGHT(mT)
HAW 2 SERIES	9.1	2	139	0.4	2
HAW 5 SERIES	13.7	5	271	0.6	5
HAW 11 SERIES	19.8	11	610	0.8	10
HAW 20 SERIES	21.3	20	1,017	1.1	15
HAW 40 SERIES	24.4	40	2,034	1.2	22
HAW 60 SERIES	25.9	60	3,050	1.5	28
HAW 80 SERIES	27.4	80	4,068	1.7	35
HAW 100 SERIES	30.5	100	5,150	1.8	40

CANADA: Chester, NS
T: 1-902-275-3591
 E: sales@hawboldt.ca
 ISO 9001 - 2015

USA: Everett, WA
T: 1-206-595-5529
 E: reed.okawa@hawboldt.ca

